

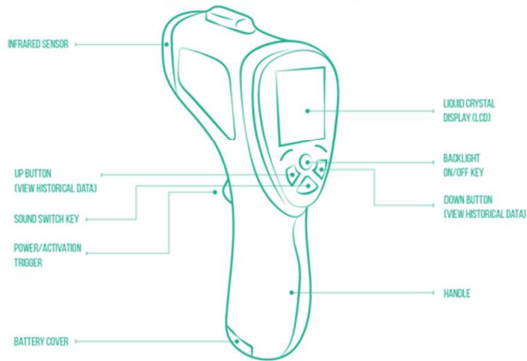
AVRO | INFRARED FOREHEAD THERMOMETER

REFERENCE GUIDE

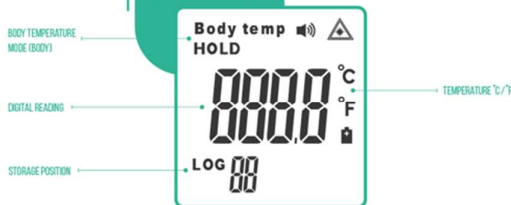
PRODUCT PICTURE



PRODUCT STRUCTURE



LCD SCREEN



QUICK START GUIDE

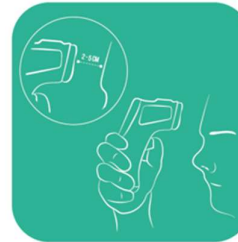
01



LOAD THE BATTERIES

OPEN THE BATTERY COVER BY SLIDING IT IN THE DIRECTION OF THE ARROW. INSERT THE 2 AAA BATTERIES, ENSURING THE + AND - ARE THE CORRECT WAY UP AS PER THE MARKINGS ON THE DEVICE. THEN CLOSE THE BATTERY COVER BY SLIDING IT BACK AGAIN IN THE OPPOSITE DIRECTION.

02



AIMING THE THERMOMETER

AIM THE THERMOMETER AT THE CENTRE OF THE FOREHEAD, JUST ABOVE EYEBROW LEVEL, FROM A DISTANCE OF 2CM-5CM. DO NOT MAKE CONTACT BETWEEN THE THERMOMETER AND THE SKIN.

03



PULL THE TRIGGER

PULL THE TRIGGER ON THE DEVICE AND HOLD FOR UP TO 3 SECONDS UNTIL YOU HEAR A BEEP*. A SINGLE BEEP INDICATES A READING WITHIN THE NORMAL TEMPERATURE RANGE, WHILST A TRIPLE BEEP INDICATES AN ANOMALY IN TEMPERATURE.

04



LOOK FOR READING

LOOK AT THE SCREEN FOR YOUR READING. FOR THE FIRST FEW SECONDS, IT WILL DISPLAY A GREEN BACKGROUND FOR A NORMAL READING, AMBER FOR SLIGHTLY HIGH OR LOW, OR RED FOR ABNORMAL. ORDINARILY, YOUR TEMPERATURE WILL BE DISPLAYED NUMERICALLY, BUT IN EXTREME CASES, 'HIGH' OR 'LOW' WILL BE DISPLAYED INSTEAD.

***NOTE:**
FROM STANDBY MODE, THE FIRST BEEP WILL INDICATE START UP, THEN THE SECOND BEEP OR BEEPS WILL INDICATE A SUCCESSFUL READING. IN SILENT MODE, THERE WILL BE NO BEEPS; PLEASE REFER TO THE SCREEN TO CONFIRM A SUCCESSFUL READING IN THIS CASE.

THE DEVICE WILL GO INTO STANDBY MODE AUTOMATICALLY AFTER 8 SECONDS, UNLESS THE TRIGGER IS PULLED AGAIN FOR ANOTHER READING. FOR FULL INSTRUCTIONS, PLEASE REFER TO THE ENCLOSED USER GUIDE.